

Lake Chelan Reclamation District News



Power Costs, Oil Prices Drive Up Rates in 2007

The District's irrigation system is run from electrical power purchased by contract from Bonneville Power Administration. The contract conditions change every five years. During the past five years, Bonneville has experienced increased costs in transmission and generation together with decreased hydropower production due to drought conditions and fish mitigation. The result to the District is a 233% increase in power for the irrigation system for the next five year period. That increase translates into \$130,000 per year or a 15% increase in overall expenses. The irrigation, domestic and sewer systems all experienced additional rising costs from oil prices in general which severely impacts the price of both PVC pipe and asphalt. All these changes coupled together have required rate increases in 2007 of \$10 per acre and \$40 per parcel for irrigation, \$1 per month for domestic water and \$2 per month for sewer. The 2007 rates are as follows:

Irrigation

Base Rate	\$108.00/acre	\$80.00 per parcel
Indian Lands	\$ 81.00 /acre	\$60.00 per parcel
Laycock Contracts	\$196.36/acre	\$80.00 per parcel
Laycock Lands	\$ 2.50/acre	

Sewer

Base Rate per ERU * \$40.00 per month

Domestic

Base Rate per ERU* (first 700 cubic feet)	\$28.00 per month
Excess Water (over 700 cubic feet)	\$ 4.00 per 100 cf

*ERU stands for Equivalent Residential Unit



Manson Boulevard Road Improvements

Manson Boulevard is getting a major facelift along about four miles of road between Manson Bay Park and the intersection of Washington and Loop by Chelan County. Both irrigation and domestic water users along the route of the new road improvements should be prepared for interruptions in service from time to time next spring and early summer. In some cases, irrigation turnouts and/or domestic meters will have to be moved. The work may also impact private irrigation mains or private domestic side services. Chelan County is responsible for coordinating the relocation or reconnection of your private service lines to the District turnout or meter. If you live along this route, make sure you have coordinated your issues with Chelan County in advance so that these transitions can be made as smoothly as possible.

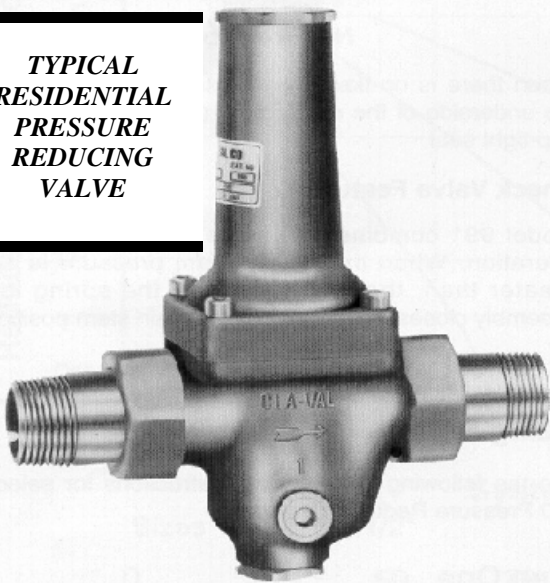
Special points of interest: in this issue.....

- Is Your Domestic Water Pressure Higher Than is Safe?
- Summer Homes Protect Your Pipes
- Director Election to be held December 12, 2006

Is Your Domestic Water Pressure Higher Than is Safe?

The domestic system works by pumping water from the water treatment plant up to the tallest finished water reservoir. The finished water reservoir level varies from between 435 and 410 feet above lake level. Gravity translates this elevation difference to pressures as high as 188 pounds per square inch (psi) at lake elevation if it were not for friction losses in pipelines and main line pressure reducing valves. In reality, the pressure at the water meters is less than 100 psi throughout most of the system. The following map shows the parts of the system where pressures may exceed 100 psi during some or all of the calendar year. High demand periods during July and August can alter system flows and significantly drop the pressure in certain parts of the system.

**TYPICAL
RESIDENTIAL
PRESSURE
REDUCING
VALVE**



If you live in an area where pressures may be in excess of 100 psi, we believe it is imperative that you install an individual pressure regulating valve on both your house and irrigation systems. This pressure should be measured in the low demand periods during the winter. Some waterfront areas can exceed 125 psi in specific parts of the service area. Pressures over 100 psi can damage the pop-off valve on your hot water tank and can cause serious water hammer problems in your home and irrigation plumbing. High pressure is the leading cause of domestic water leaks and can damage or destroy many fittings, valves and fixtures in your home or irrigation system.

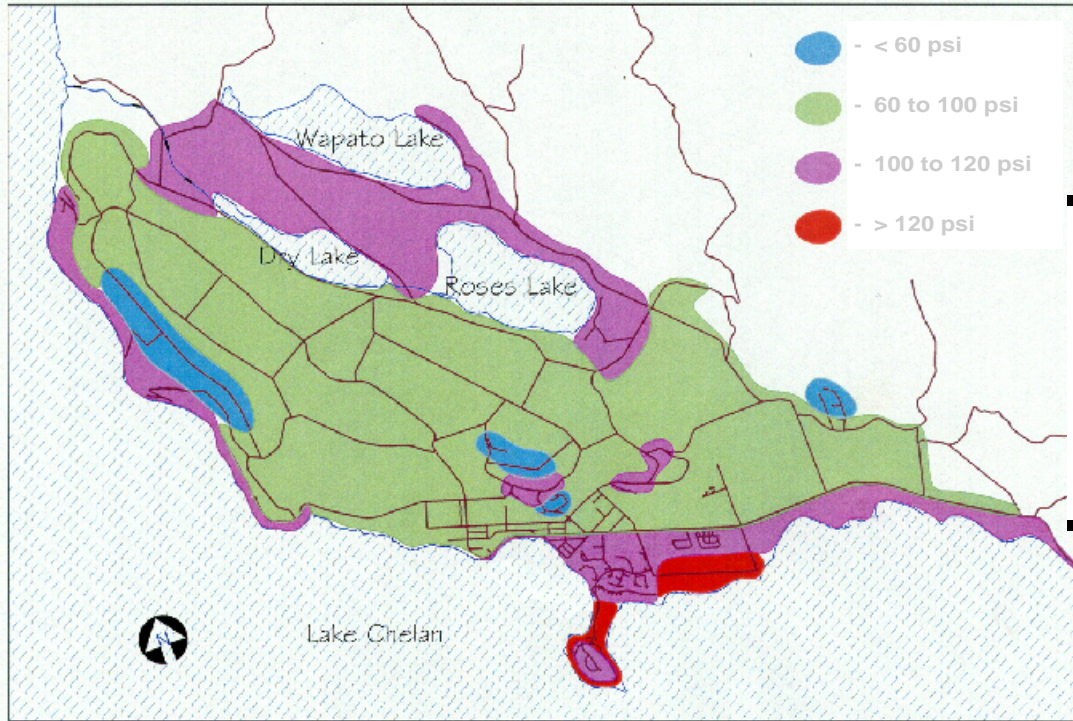
If you live in an area where the pressures are between 60 and 100 psi we still strongly recommend that you consider installing a pressure reducing valve for your house and irrigation systems. Homeowners should strive to design and operate irrigation and home plumbing systems for the optimum pressure range of 40 to 60 psi. Pressure regulators act as both a water conservation device and personal protection device against high pressures.

Short term high pressures and intermittent pressure surges can occur throughout the system when line breaks occur or when fire hydrants are used. It is the water users responsibility to protect themselves against these intermittent pressure surges.

Why doesn't the Lake Chelan Reclamation District simply install more pressure reducing valves in the distribution system to reduce everyone's pressure to 60 psi? The answer is that it is impractical to do so and would result in the loss of service to higher elevation homes and significantly reduced fire fighting capabilities. Homes built above 1400 feet elevation near the reservoirs and above 1250 feet elevation on the outer edges of the system already require booster pumps or careful planning on how they use their water. Our topography lends itself to only two pressure zones to which most of the backbone of the system has been designed and installed. Desired fire flows in the vicinity of the downtown businesses, our schools, our local industries and residential areas are just barely satisfactory now to meet safety standards. High pressures are not uncommon in hilly areas and your cooperation to address your own high pressure situations is appreciated. If you have any questions about pressure in your area, please stop by and we can discuss your particular case in more detail. In the mean time, be safe with high pressures and install pressure reducing valves on your service lines when in doubt.

Did you know:

High pressure is the leading cause of domestic water leaks.



“Check and see what the domestic water pressure is in your neighborhood.”

MANSON PRESSURE ZONES

Summer Homes Protect Your

Some winters we have had a number of unoccupied homes experience frozen pipes during the periods of extreme cold weather. Water lines are much more susceptible to freeze damage when there is no water use. If your house will be mostly unoccupied but you believe you will need water in the winter, we recommend that you insulate the meter box and have someone local check your plumbing and run some water if necessary during extremely cold periods. If you will not need water during the winter months, we recommend that you turn the water off at your shut off valve and completely drain the house plumbing. PLEASE do not attempt to shut off your service at the meter box yourself. The valves in the meter boxes are the property of the District, and if you break them it may cause us to shut down service to your whole neighborhood. Other cold weather tips include:

- ◆ **Disconnect and drain outdoor hoses.** Detaching the hose allows water to drain from the pipe. Otherwise, a single hard, overnight freeze can burst either the faucet or the pipe it's connected to.
- ◆ **Insulate pipes or faucets in unheated areas.** If you have pipelines in an unheated garage or cold crawl space under the house, wrap the water pipes before temperatures plummet. Hardware or building supply stores will have good pipe wrapping materials available.
- ◆ **Seal off access doors, air vents and cracks.** Repair broken basement windows. Winter winds whistling through overlooked openings can quickly freeze exposed water pipes. But don't plug air vents your furnace or water heater needs for good combustion.
- ◆ **Find the master shutoff.** It may be near the water heater or the washing machine. More likely it's where the water line comes into your house from the street. If a pipe bursts anywhere in the house (kitchen, bath, basement or crawl space) this valve turns it off, so find it now and paint it a bright color or hang a tag on it. Be sure everyone in the family knows where it is and what it does.



Lake Chelan Reclamation District

BULK RATE
MAIL
U.S. POSTAGE
PAID
MANSON, WA
PERMIT NO. 12

P.O. Box 'J' ? 80 Wapato Way
Manson, Washington 98831

Phone: 509-687-3548
Fax: 509-687-9884
Email: staff@lcrd.org
www.lcrd.org

Director Election December 12, 2006

One incumbent and one challenger have submitted their names for nomination as a Director for the term 2007-2008. Incumbent Gordon Lester is being challenged by Kenyon Rau. The two year term completes the unexpired term of the late Coy Tackett. The candidate receiving the largest number of votes will be elected. All qualified electors will be entitled to vote for one person on each ballot.

VOTING QUALIFICATIONS: RCW 87.03.051 "... a person eighteen years old, being a citizen of the United States and a resident of the state and who holds title or evidence of title to assessable land in the district shall

be entitled to vote therein, and to be recognized as an elector. A corporation, general partnership, limited partnership, limited liability company, or other legal entity formed pursuant to the laws of the state of Washington or qualified to do business in the state of Washington owning land in the district shall be recognized as an elector. As used in this section, "entity" means a corporation, general partnership, limited partnership, limited liability company, or other legal entity formed pursuant to the laws of the state of Washington or qualified to do business in the state of Washington. "Ownership" shall mean the aggregate of all assessable acres owned by an elector, individually or jointly, within one district."

***"Incumbent
Gordon Lester
is being challenged by
Kenyon Rau."***

VOTING RIGHTS: RCW 87.03.051 "... No one ownership may accumulate more than forty-nine percent of the votes in one district. ... an elector shall be entitled to two votes for each five shares or fraction thereof. The ballots cast for each ownership of land or shares shall be exercised by common agreement between electors or when land is held as community property, the accumulated votes may be divided equally between husband and wife. Except for community property ownership, in the absence of the submission of the common agreement the authority to cast the ballots for that parcel of land for which there is more than one ownership interest. ... An agent of an entity owning land in the district, duly authorized in writing, may vote on behalf of the entity by filing with the election officers his or her instrument of authority."

ABSENTEE BALLOTS: RCW 87.03.032 "... any qualified district elector who certifies that he cannot conveniently be present at his proper election precinct on the day of election may vote by absentee ballot, and that a ballot and form of certificate of qualifications will be furnished to him on written request being made of the district's secretary. The requisite ballot and a form of certificate of qualifications shall be furnished by the district's secretary to any person who prior to the date of election makes written request therefore, stating that he is a qualified district elector."

This document was created with Win2PDF available at <http://www.daneprairie.com>.
The unregistered version of Win2PDF is for evaluation or non-commercial use only.